

Safety Guideline

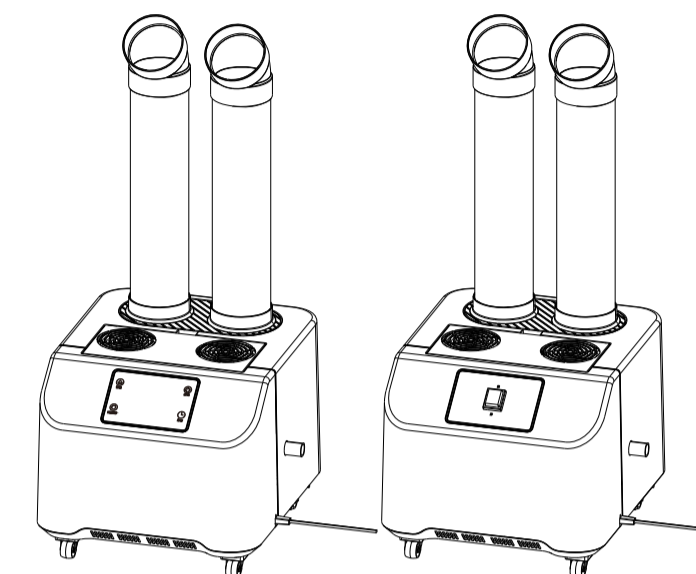
- Warning:**
The symbol is a prompt to remind the users that the operation may take the dangerous Voltage or bring harm to the human body.
- Note:**
The symbol is a prompt to remind the users that the operation is an important procedure or repair instructions.
- Do not open the main body of the machine to repair to adjust without permission.
 - Do not change the power line without permission, such as the damaged supply cord. It should be repaired by the repairing department specified by the company so as to avoid danger.
 - Do not add any additive which is not produced by our company into the water used or the water tank of the humidifier.
 - The cleanser should be stored far from children.
 - Do not put the humidifier on the places within the reach of children.
 - Any alteration or modification to the humidifier may possibly bring inconvenience or harm to the users if it is not approved by our company.
 - If there is any abnormal noise or smell occurring during the operation, please turn off the humidifier at once and plug out the plug from the power source. It should be repaired by the professional repairmen if it needs to be repaired.
 - Before cleaning adding water moving the humidifier, please turn off the switch and plug out the plug.
 - Plug out the plug when the humidifier is no used.
 - During the operation, do not use any part of your body to touch the water inside the sink or any parts inside the water.
 - Do not operate the humidifier if there is no water inside the sink.
 - Do not put and use the humidifier under too high temperature environment such as bathroom.
 - Do not scrap the transducer with hard object.
 - Do not clean the sink or transducer with the cleanser which is not produced or supervised by our company.
 - Do not make the water flow or splash into the interior part of the base so as to avoid the damage to the parts.

5

- If the temperature is too low or the humidity is too high in the room, the spray cannot be fully spread, then it is suggested to turn down the fog volume.
- Instead of being discarded carelessly, the humidifier should be properly dealt with after it is scrapped.
- In order to make sure the humidifier can operate in normal condition without the occurrence of accident, please pay attention to the environment in which it is placed in.
- The humidifier should be placed on the flat and hard area to keep it stable and avoid the overflow of the water.
- The humidifier should be placed on area where is far from the stove and thermal sources as well as free from the direct sunlight.
- The humidifier should be placed in the environment where has normal temperature instead of cold environment so as to avoid the damage to the humidifier.
- The humidifier should be kept far away from the furniture and home appliances so as to avoid the direct spray of fog as well as the moisture or attachment of "white power" on their surface.

6

GENERAL TROUBLESHOOTING DO NOT ATTEMPT TO REPAIR THE HUMIDIFIER BASE BY YOURSELF		
Symptoms	Reason analysis	Solutions
Indicator light doesn't work	The plug is not connected properly	Connect the plug correctly, turn on the power
	Power board disconnects with connect in dine PCB is broken	Take off base cover, and connect them correctly Replace it with a new PCB
Indicator light in red color	Lacking water	Adding water
	The floating ball above the reed switch was blocked The protective shell of the floating ball hasn't been taken off	Twist the floating Take it off
Indicator light can work normally, but no mist or small mist	Has scale on the surface of the atomizer	Clean the atomizer
	Water is dirty or the water contains too much mineral substance	Replace it with clear water
Leaking water from the gap between the water tank and base part	Water tank was broken	Replace it with a new water tank
	Floating ball was broken	Replace it with a new floating ball
	Dirty floating ball or piston	Clean the floating ball and piston
Leaking water from the bottom of the base part	The base part was broken	Replace it with a new base part
	The screw which was used to fix the atomization board is not tight enough	Replace it with a new atomization board
It has mist in base part, But couldn't out	Fan was broken	Replace it with a new fan
	Air inlet was blocked	Take off the foam which is at the bottom of the base part
Abnormal smell	New machine	Open the water tank and lay it open in a steady and cool place for 12 hours
	Dirty water or water stored in the machine for a long time	Clean the water tank and add clear water
Abnormal sound	Too much dust on the fan	replace it with a new fan



Intelligent Mode Mechanical Mode



Ultrasonic Humidifier
Model : HQ-JS2315

Function Introduction

Name	Product	User's Manual
Quantity	1 Piece	1 Book

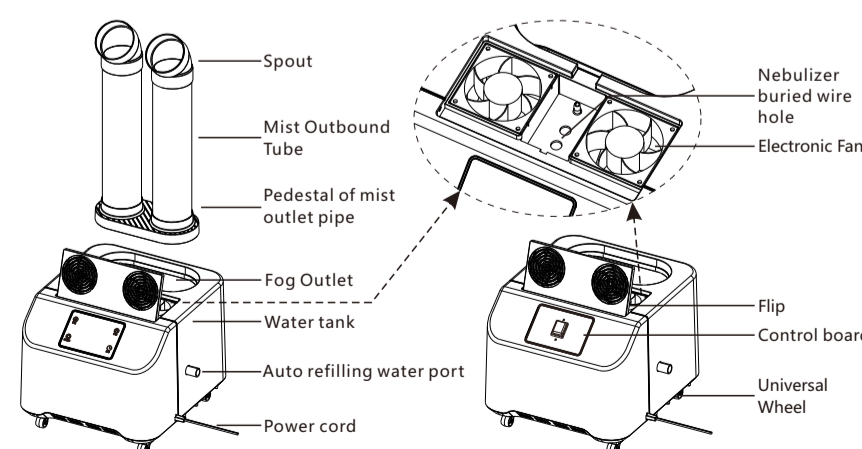
Technical Parameters

Product Model : HQ-JS2315 Noise : ≤60dB(A)
 Nominal Voltage : 220V-240V~ Net/Gross Weight :
 Nominal Frequency : 50Hz/60Hz Six Atomizers 7.30KG/8.80KG
 Rated Power Input : Six Atomizers190W Ten Atomizers 8.0KG/9.50KG
 Ten Atomizers300W/Twelve Atomizers370W Twelve Atomizers 8.25KG/9.75KG
 Twenty Atomizers600W/Forty Atomizers1200W Twenty Atomizers 9.35KG/10.85KG
 Rated Humidification : Six Atomizers6KG/H Unit Size : 360×400×810MM
 Ten Atomizers10KG/H, Twelve Atomizers12KG/H
 Twenty Atomizers 20KG/H, Forty Atomizers 40KG/H

Features of Ultrasonic Humidifier

1. Automatic protection for water shortage
2. Intelligent constant humidity
3. Intermittent Spray
4. Timing function
5. Universal Wheel

Structure Diagram



1

Functions of Intelligent Model

- Power :**
After plugging in the power, the humidifier will enter the standby mode. The standby light will turn on. Now press the Power button one time to cancel the standby indicator. The humidifier starts to work in high mode.
- Timer :**
Press this button to enter the timing setting, the time is 24 hours adjustment, 1 - 24 hours.
- Mist Interval :**
Press the switch button for three seconds will enter the interval mode. Spraying for 1 minute; and stopping for 1 minute; spraying for 1 minute and stopping for 3 minutes; spraying for 1 minutes and stopping for 5 minutes.
- Humidity Level :**
Constant humidity button : Set humidity between 45% - 95%. user press this button until it reaches 95%. press one more time to cancel settings. Set a certain value and the humidifier will work automatically. When the humidity in the room is achieving this value, it will stop working until humidity getting lower.

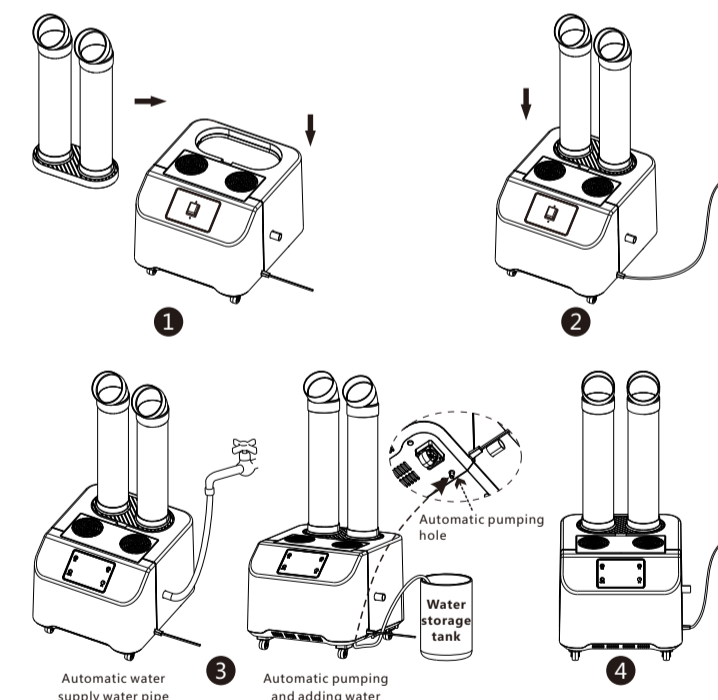
The guide for mechanical model

- ON/OFF :**
Press the switch down, the indicator lights up, and the product starts to work; Press the switch upward, the light goes out, and the product stops working. After filling with water, put the whole mist on the body, connect the AC voltage 220V, 50Hz power supply, press the switch and the product starts to work.

Direction for Use

- 1. The humidifier should be placed for half an hour under moderate and good environmental temperature if it is used for the first time. The water should be prevented from flowing into the wind intake net during the usage.
- 2. The humidifier is not used for long time, the water tank and sink should be cleaned before using. When cleaning the fan, it should be absolutely free from water without bring the water into the humidifier.

2



Instructions for adding water

- Mechanical version:**
1. Automatically add water to the water pipe, one end is connected to the faucet or water pipe, one end is connected to the automatic water port on the machine.
2. Move the machine to the place that needs to be humidified, plug in the power, press the switch to start working.

3

Smart version:

3. Can be connected to the water pipe automatic adding water and pump automatic adding water two ways.
4. After the user has arranged the water adding device, plug in the power supply and touch the switch to start working.

Daily Maintenance

In some places, the water has hard quality with relative higher calcium and magnesium ion content. In addition, some places use bleaching powder as the cleanser. During the usage of the humidifier, some part of calcium and magnesium ion will be sprayed out with the water mist which spread onto the surface of objects and floor. After drying, it forms the "white powder" and part of them precipitates on the surface of atomizer plate and sink to form scale. It is caused by the impurity of the water quality. The scale formed on surface of the atomizer plate will affect the working effect of the humidifier.

The method to keep the humidifier clean

It is recommended to clean the atomizer plate water tank, the scale of the base and air-intake net when using the humidifier. Constantly change the old water in the tank to keep the humidifier clean. Do not store water inside the water tank and sink if it is not used for long time. When it is store up, all the parts should be cleaned, wiped off and free from water before it is put into the original packing box.

The method to clean the atomizer sheet base

After diluting the cleanser, put into the base add the temperature of 45 degree to completely dilute the cleanser. After soaking for ten minutes, use the small brush to clean the surface of transducer until the scale is completely removed. The 1 : 1 proportion of water and white vinegar or citric acid to clean the base; Then use the water to clean the surface of base and transducer.

4